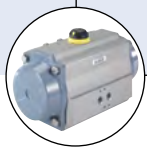


Ball valve for hygienic applications



- High performance and low maintenance
- Suitable for CIP and SIP (cleaning in process)
- Stainless steel reinforced PTFE Seal: conform to EC Regulation 1935/2004/EC, Regulation (EU) No. 10/2011, FDA, USP Class VI
- ISO 5211 head flange

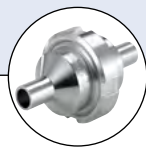
Type 2654 Hygienic can be combined with...



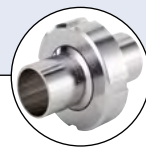
Type 2051/2
Pneumatic actuator



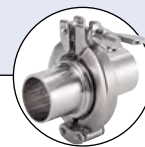
Type 3003/4/5
Electric actuator



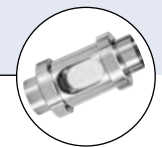
Type BBS-10
Check valve



Type BBS-03
Sterile threaded connection



Type BBS-05
Sterile quick connect



Type BBS-3F
Flow indicator

The ball valves are manufactured using high quality materials and fulfil the requirements of many international standards. They offer maximum flow performance for hygienic duties.

They boast a high quality finish and are available in different variations. Through their simple construction the ball valves are very low-maintenance.

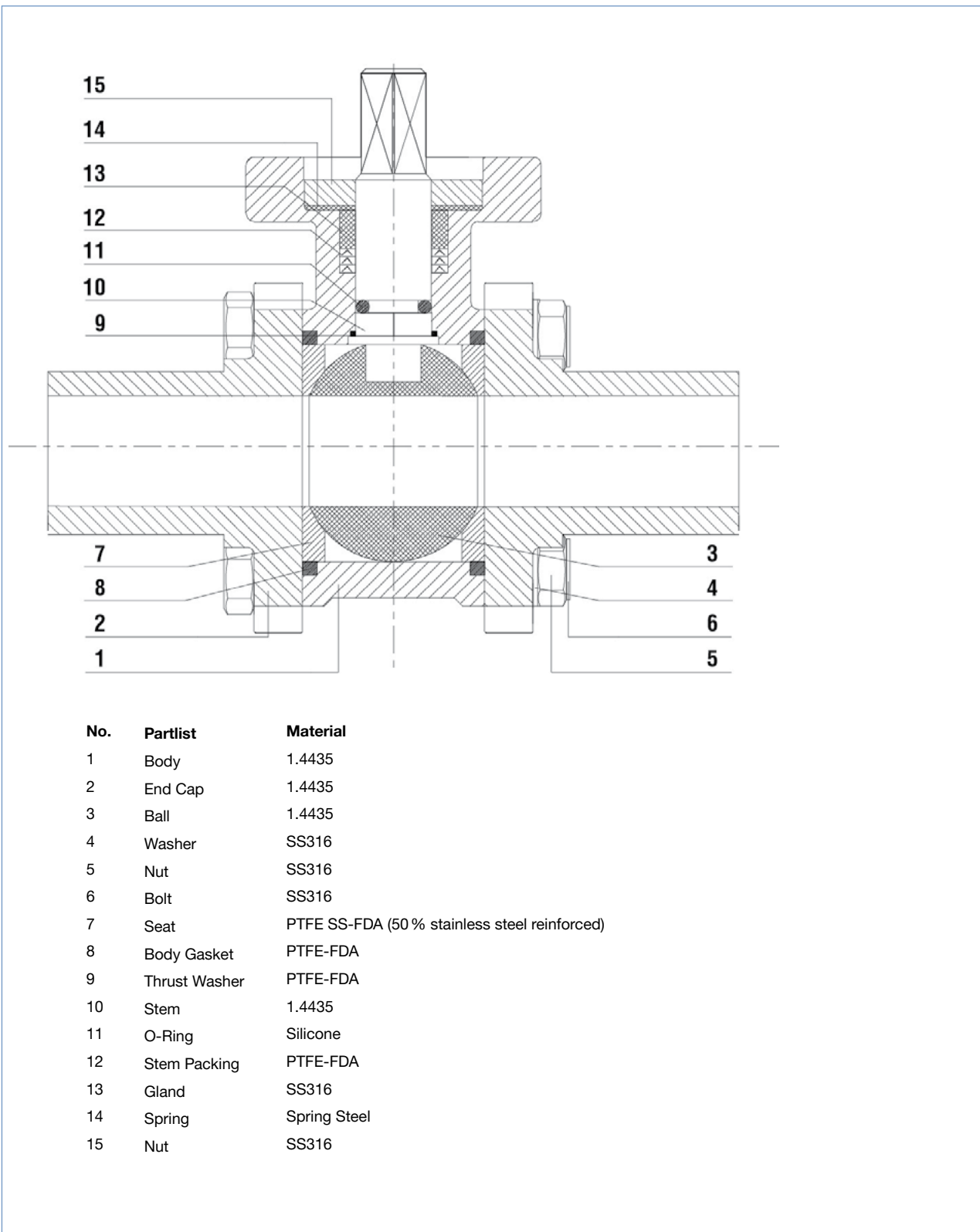
They are available with and without manual lever. Next to this, they can be connected via the mechanical interface (acc. to ISO 5211) with pneumatic (for example, type 2051, 2052) and electrical rotary actuators (for example, type 3003, 3004, 3005).

Applications:

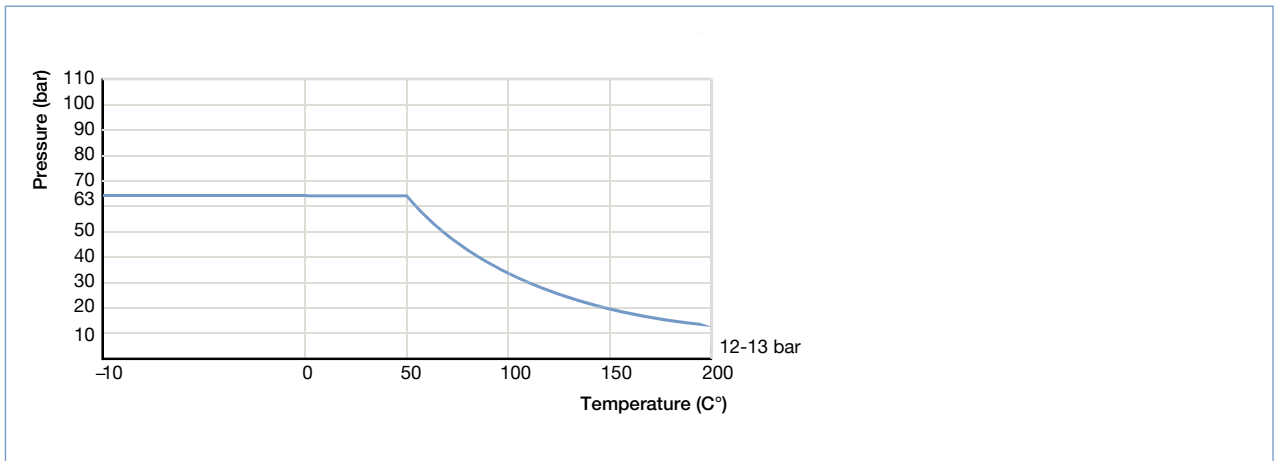
- Biotechnology
- Pharmaceutical industry
- Chemical industry
- Dairy
- Food Industry
- Cosmetics

Technical data	
Available standard sizes	Orbital welded end versions acc. DIN 11850 R2 ISO1127 / ISO 4200 ASME BPE
Material medium contact	Stainless steel 1.4435 (316L)
Material medium separated	1.4435
Seals	Seat in stainless steel reinforced PTFE (FDA conform). Body gasket, thrust washer and stem packing in PTFE (FDA conform)
Surface quality	Wetted surface RA < Ra 0.8 µm Body surface electropolished
Medium temperature	- 10 °C up to 200 °C max. 6 bar for steam with sealing PTFE/stainless steel reinforced
Medium pressure	max. 63 bar (see pressure temperature diagram)
Conformity (PTFE seal)	1935/2004/EC, FDA, USP Class VI
Lever	Electropolished, CFM8 (1.4408)
ISO head flange	EN ISO 5211

Materials



Pressure Temperature Chart

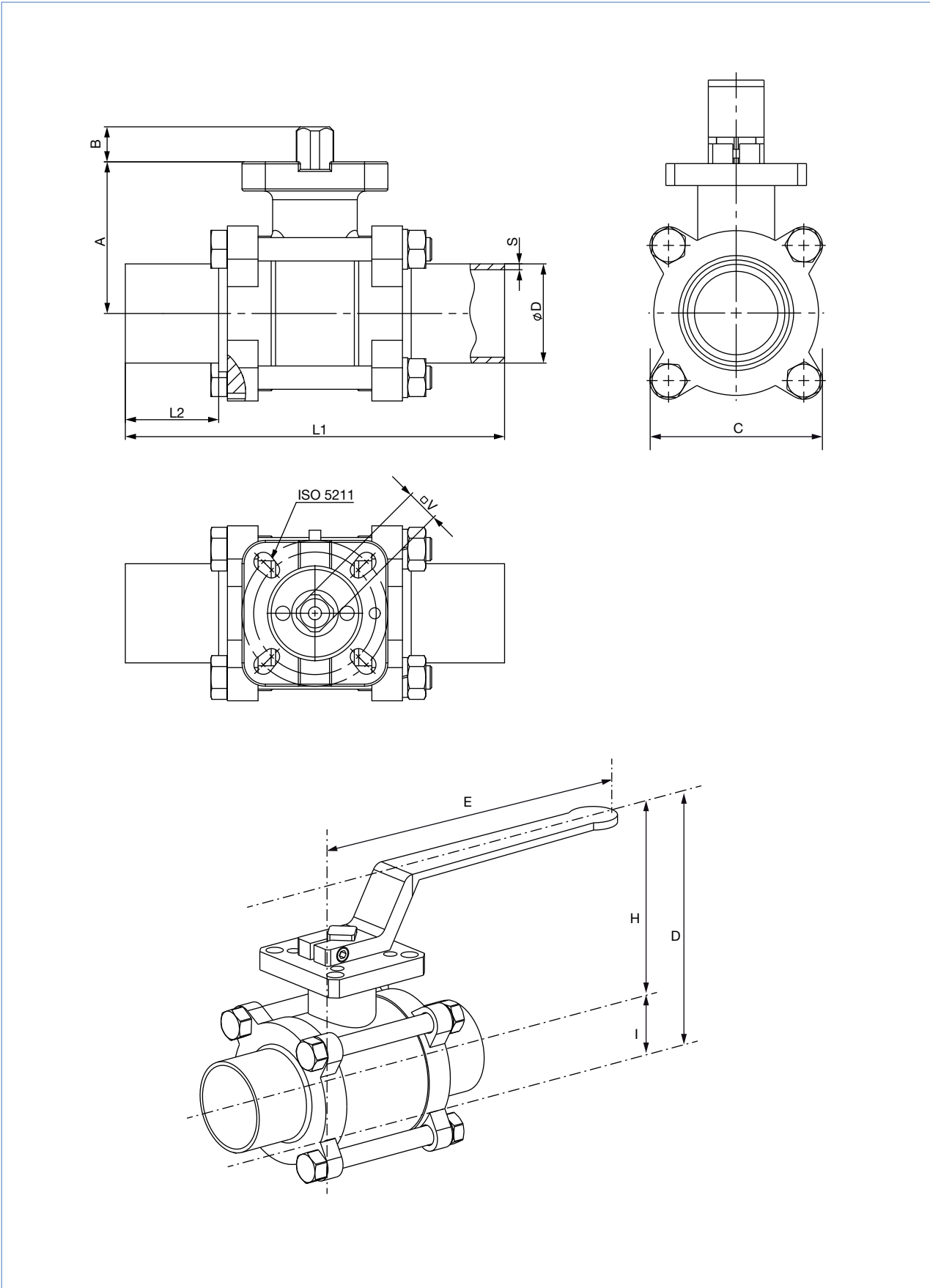


Torques

DN	8	10	15	20	25	32	40	50	65	80	100
Breakaway torque [Nm]	6	6	10	14	17	24	29	44	78	112	140
Running torque [Nm]	4	4	7	9	11	16	19	30	52	89	112

The values were measured under the following conditions: max. delta P, ambient temperature, medium: water

Dimensions [mm]



DTS 1000243919 EN Version: J Status: RL (released | freigegeben | valide) printed: 12.06.2019

Ordering chart for ball valve with weld end

DIN 11850 R2

Orifice [mm]	A	B	C	D	E	H	I	L1	L2	Ø D	S	V	ISO 5211	Article no. manual operated	Article no. bare shaft
10	40	9	47.5	90	125	64	26	100	23	13.0	1.5	9	F03, F04	351683	351667
15	40	9	47.5	90	125	64	26	100	25	19.0	1.5	9	F03, F04	351684	351668
20	44	9	52.5	96	125	68	28	105	25	23.0	1.5	9	F03, F04	351685	351669
25	52	12	58	123	189	91	32	115	25	29.0	1.5	11	F04, F05	314427	351670
32	58	12	71	134.5	189	97	37.5	140	33	35.0	1.5	11	F04, F05	351686	351671
40	68	12	78.5	149	221	107	42	150	33	41.0	1.5	14	F05, F07	351687	351672
50	77	16	94.5	167	221	116.5	50.5	170	33	53.0	1.5	14	F05, F07	351688	351673
65	98	19	122	218.5	302	154.5	64	220	40	70.0	2.0	17	F07, F10	351689	351674
80	110	19	186	252	302	166.5	85.5	300	65	85.0	2.0	17	F07, F10	351690	351675
100	138	24	217.5	316.5	350	219.5	97	325	65	104.0	2.0	22	F10	351691	351676

ISO 1127 / ISO 4200

Orifice [mm]	A	B	C	D	E	H	I	L1	L2	Ø D	S	V	ISO 5211	Article no. manual operated	Article no. bare shaft
8	40	9	47.5	90	125	64	26	100	23	13.5	1.6	9	F03/F04	773810	773799
10	40	9	47.5	90	125	64	26	100	23	17.2	1.6	9	F03, F04	773811	773800
15	40	9	47.5	90	125	64	26	100	25	21.3	1.6	9	F03, F04	773812	773801
20	44	9	52.5	96	125	68	28	105	25	26.9	1.6	9	F03, F04	773813	773802
25	52	12	58	123	189	91	32	115	25	33.7	2.0	11	F04, F05	773814	773803
32	58	12	71	134.5	189	97	37.5	140	33	42.4	2.0	11	F04, F05	773815	773804
40	68	12	78.5	149	221	107	42	150	33	48.3	2.0	14	F05, F07	773816	773805
50	77	16	94.5	167	221	116.5	50.5	170	33	60.3	2.0	14	F05, F07	773817	773806
65	98	19	122	218.5	302	154.5	64	220	40	76.1	2.0	17	F07, F10	773818	773807
80	110	19	186	252	302	166.5	85.5	300	65	88.9	2.3	17	F07, F10	773819	773808
100	138	24	217.5	316.5	350	219.5	97	325	65	114.3	2.3	22	F10	773820	773809

ASME BPE

Orifice [inch]	A	B	C	D	E	H	I	L1	L2	Ø D	S	V	ISO 5211	Article no. manual operated	Article no. bare shaft
¾"	40	9	47.5	90	125	64	26	100	23	9.53	0.89	9	F03, F04	351677	351661
½"	40	9	47.5	90	125	64	26	90	20	12.70	1.65	9	F03, F04	351678	351662
¾"	44	9	52.5	96	125	68	28	105	25	19.05	1.65	9	F03, F04	344217	344216
1"	52	12	58	123	189	91	32	115	25	25.40	1.65	11	F04, F05	343002	343003
1½"	68	12	78.5	149	221	107	42	150	33	38.10	1.65	14	F05, F07	351679	343004
2"	77	16	94.5	167	221	116.5	50.5	170	33	50.80	1.65	14	F05, F07	351680	351663
2½"	98	19	122	218.5	302	154.5	64	220	40	63.50	1.65	17	F07, F10	351681	351664
3"	110	19	186	252	302	166.5	85.5	300	65	76.20	1.65	17	F07, F10	351682	351665
4"	138	24	217.5	316.5	350	219.5	97	325	65	101.60	2.11	22	F10	345207	351666

To find your nearest Bürkert facility, click on the orange box → www.burkert.com

In case of special application conditions, please consult for advice.

Subject to alteration.
© Christian Bürkert GmbH & Co. KG

1906/10_EU-en_00895273